

POP ART AS IDENTITY WORKSHOP



OVERVIEW: students create their own "**popart themed**" portrait using

- the digital camera
- basic computer manipulation designed around screen printing preparation
- simple painting techniques

OPTIMAL GROUP SIZE: maximal 30 students and optimal if all students have use of their own computer
minimal 1 teacher/adult per 10 students

THEME: POP ART AS IDENTITY

MATERIALS/RESOURCES:

- Digital cameras (any sort)
- Computers with supporting software/ programs for digital uploading and manipulation
- Simple black/white printing facility
- photocopying machine with ability for A3 copying
- A4 and A3 white paper (80gms photocopying paper is sufficient)
at least 2 sheets of each size per student.
- 5 acrylic/poster/gouache paints (see colour chart for choices)
- paintbrushes of varying sizes (including very thin)
- space/area to hang and arrange finished product (approx 1.6m (width) x 2.1m (height) for 30 students)

OBJECTIVES: Students will

- actively discuss and learn about the history of popart with particular reference to Andy Warhol, Richard Hamilton and later Gilbert and George.
- learn how to take a digital photograph and read and copy it from the camera
- manipulate their own portrait using a computer program and techniques applicable for producing a "**popart like**" image. (see handout sheets)
- how to send images to the printer and further enlarge them via the photocopy machine.
- experience the satisfaction of an end product that is completed through the compilation of work from all participants.

PROCEDURE

(9.00-10.45)

- an introduction to the history of popart and relevant artists
- explanation of the days' proceedings
- taking of the portraits
(students will work in groups and they all take it in turn to make a portrait of one other person in their group)
- reading of photographs and copying to the computer.
- initial and introductory explanation of the program
Paint Shop Pro 8

BREAK

(11.00-12.10)

- computer manipulation of their own portrait and the saving of the image ready to be printed (could possibly be sent so that during lunch they are printing)

LUNCH

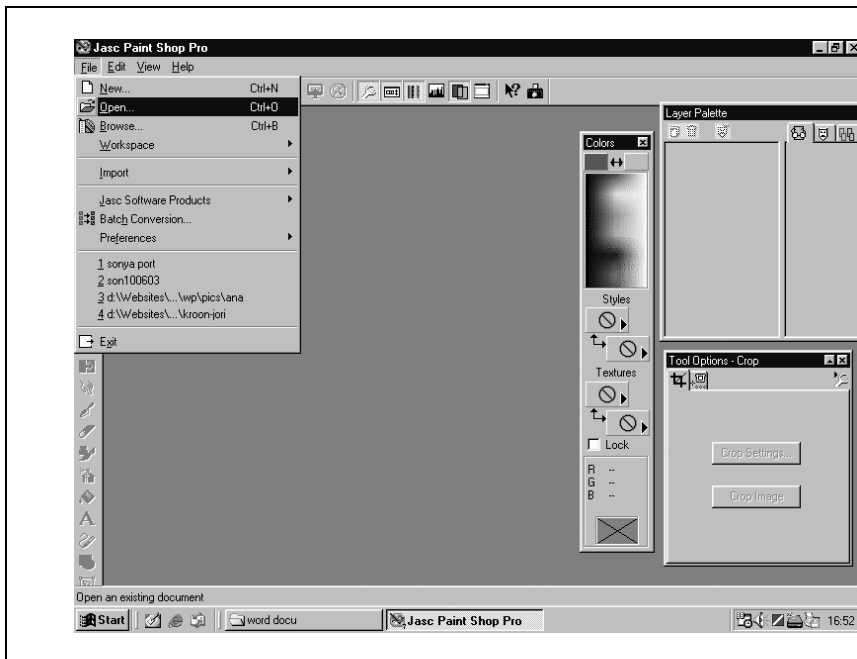
(1.00-3.20)

- Printing and enlarging the print ready for painting
- Painting the images and assembling the end product.
- photos of final work piece and discussion of the workshop.

END OF WORKSHOP

PAINT SHOP PRO 8 COMPUTER MANIPULATION FOR POPART WORKSHOP (handout)

1. OPENING THE IMAGE

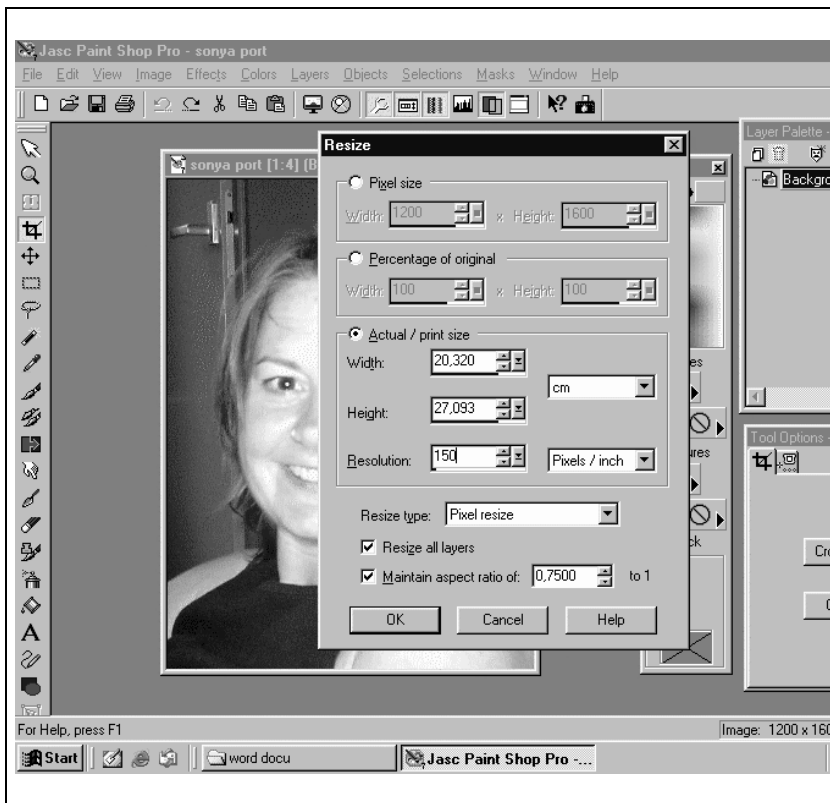


FILE

OPEN

search for your
file and
DOUBLE CLICK

DUPLICATE YOUR BACKGROUND BY DRAGGING IT TO THE LAYER SYMBOL IN THE LAYER PALETTE. SET THE BACKGROUND LAYER OUT
See demonstration in the lesson.



IMAGE

RESIZE

CLICK ON THE
Actual/print size
box

CHANGE THE
Resolution to 150

CLICK OK

2. SAVING YOUR FILE

Go to

FILE

SAVE AS

Find today's **WORKING FILE** called **PORTRAIT**

GIVE YOUR WORK A TITLE

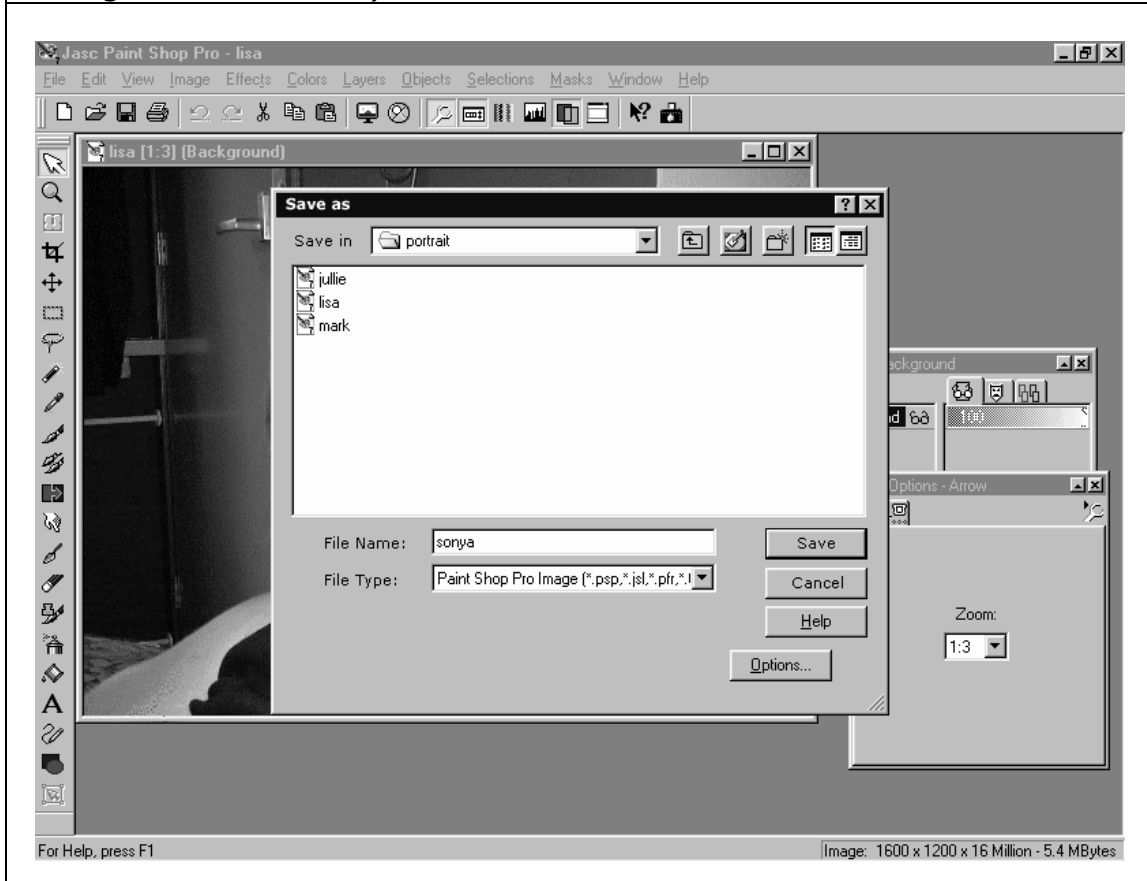
(your name in this case would be appropriate)

Scroll through the **FILE TYPE** until you find the **PSP FILE (PAINT SHOP PRO IMAGE)**, **CLICK**

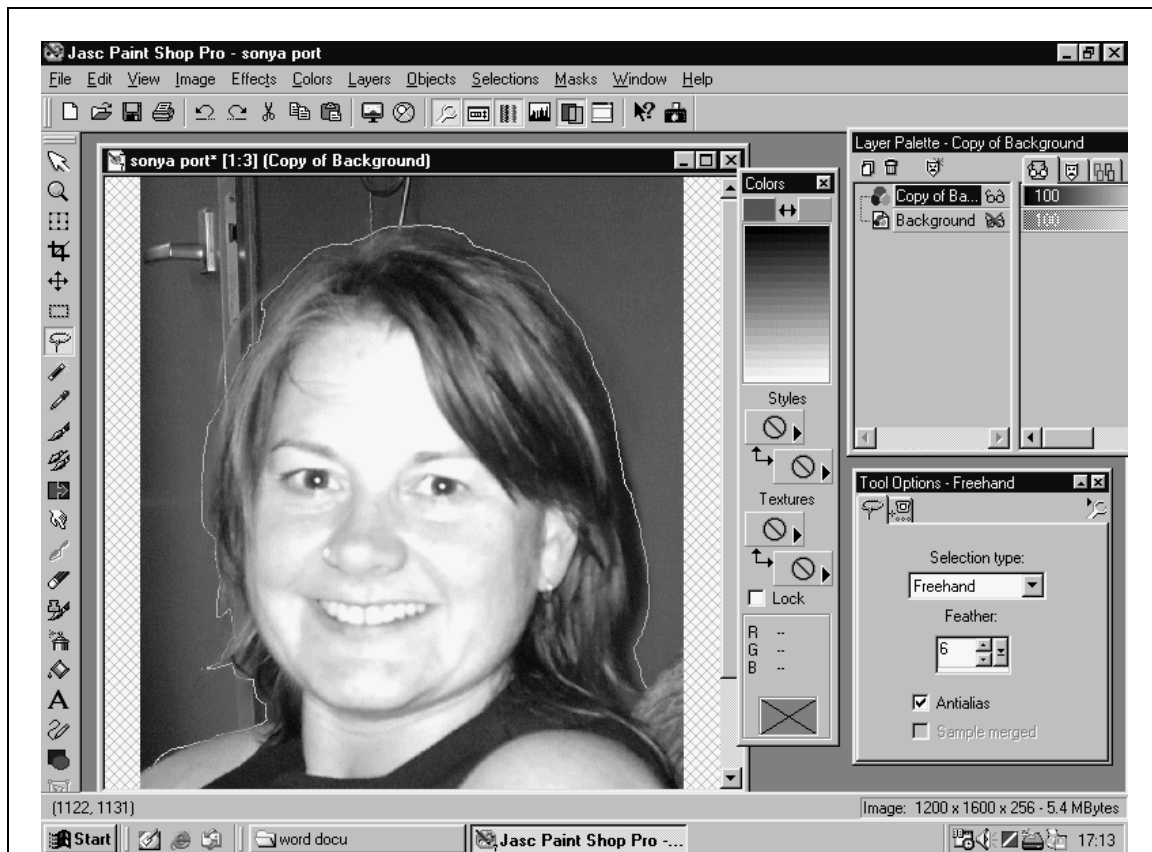
Click on **SAVE**

From now on you only have to press **CTRL S**

(and your work will be saved. Remember to do this continually throughout the lesson)



3. PREPARING THE PHOTO



Click on the **LASSO TOOL** and with the **LEFT HAND MOUSE BUTTON** held continuously in draw around the outline of your image

DON'T WORRY IF IT ISN'T PERFECT

With the **SHIFT KEY** held down you can **ADD** new selections and

With the **CTRL KEY** held down you can **DELETE** sections from your previous selection

See demonstrations in the lesson.

Press **SHIFT CTRL I** (this inverts the selection)

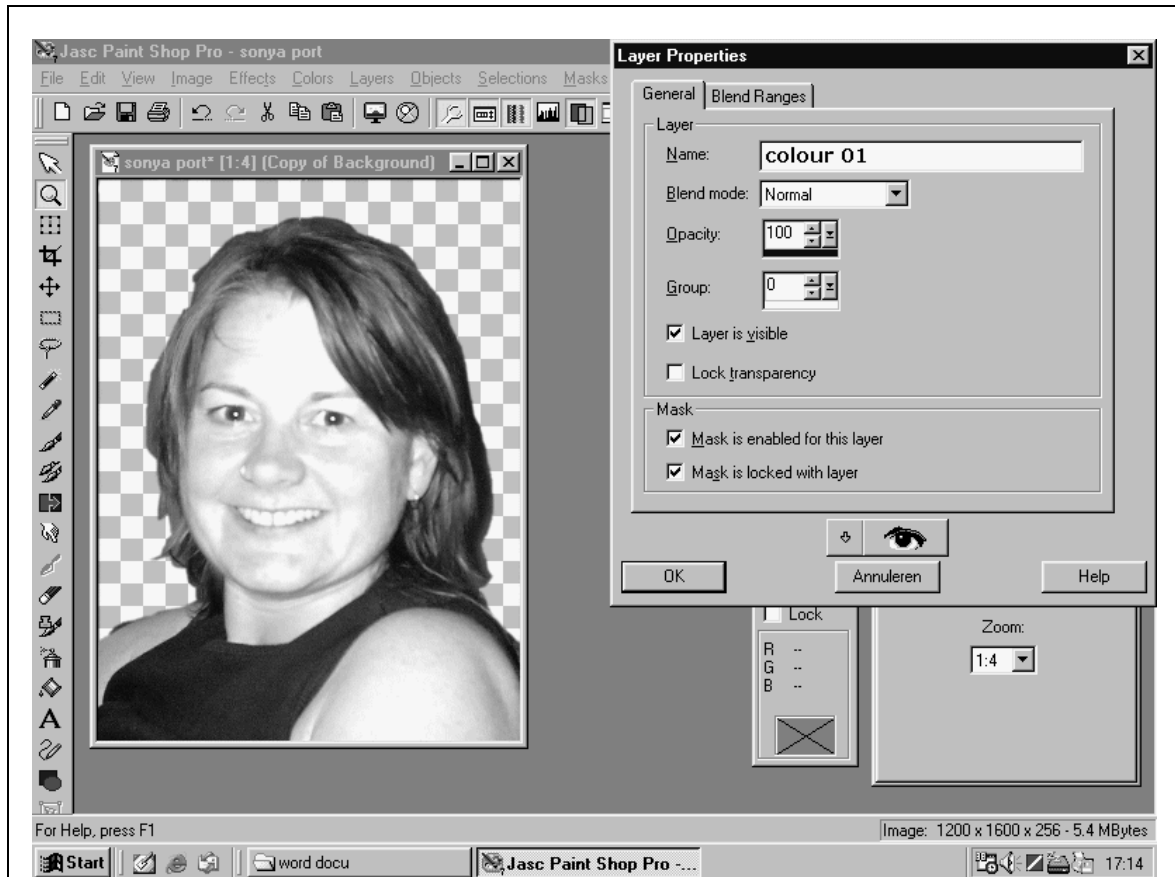
CTRL X (the background is now deleted)

CTRL D (the selection is now deselected)

COPY THIS LAYER TWICE

CTRL S

4. BACKGROUND / FIRST COLOUR



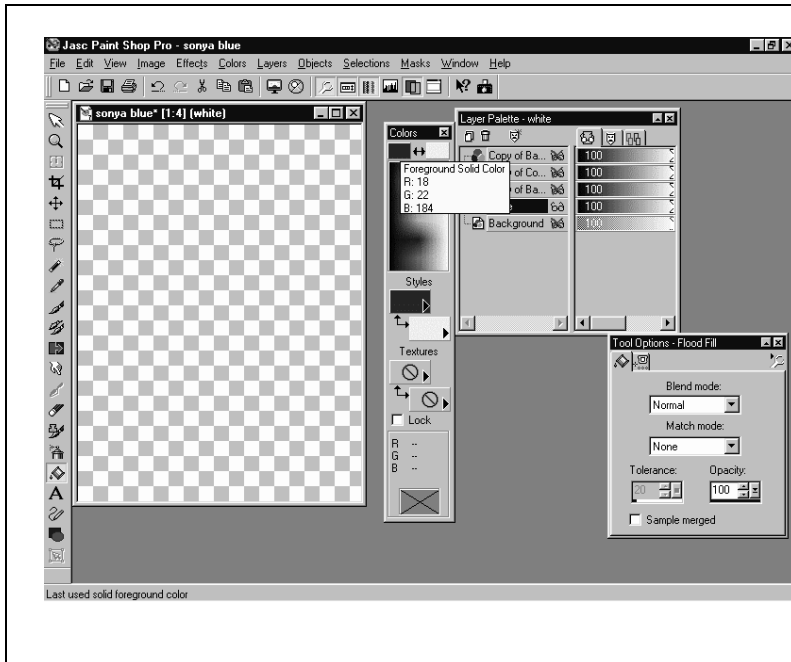
Make a new layer by clicking once on the layer symbol in the **LAYER PALETTE** box and call it **COLOUR 01**

Drag the **COLOUR 01 LAYER** to the 2nd position in the layer palette

SET ALL OTHER LAYERS OUT

NOTE: You should now have a total of five layers

CTRL S

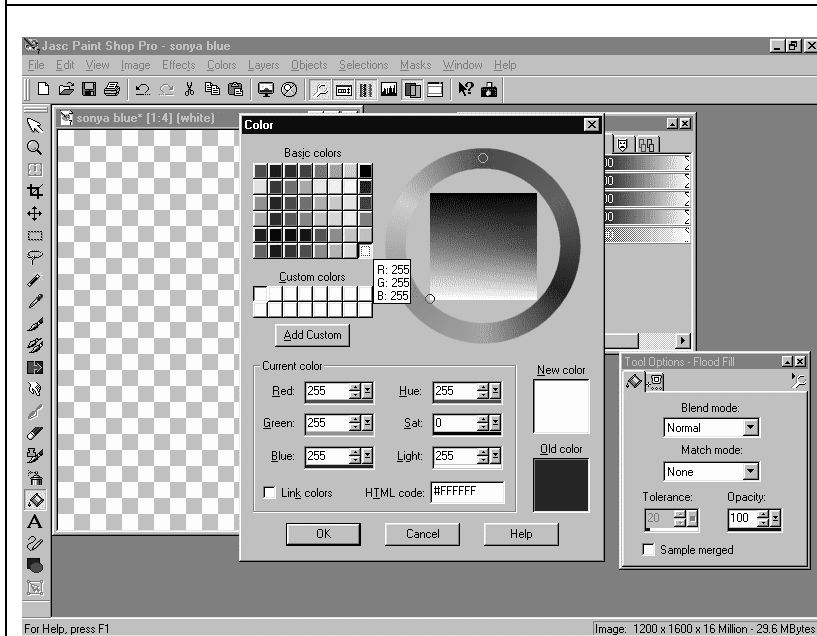


Click on the **FLOOD FILL TOOL**

Move the cursor to the first colour box (top left) of the **COLOURS PALETTE**

An **EYE DROPPER** symbol will appear

CLICK ONCE



Fill in the corresponding **HTML CODE** for your designated background colour

(See your own chart issued at the beginning of the workshop)

CLICK OK

Drag the cursor over the image. A **PAINT CAN** will appear.

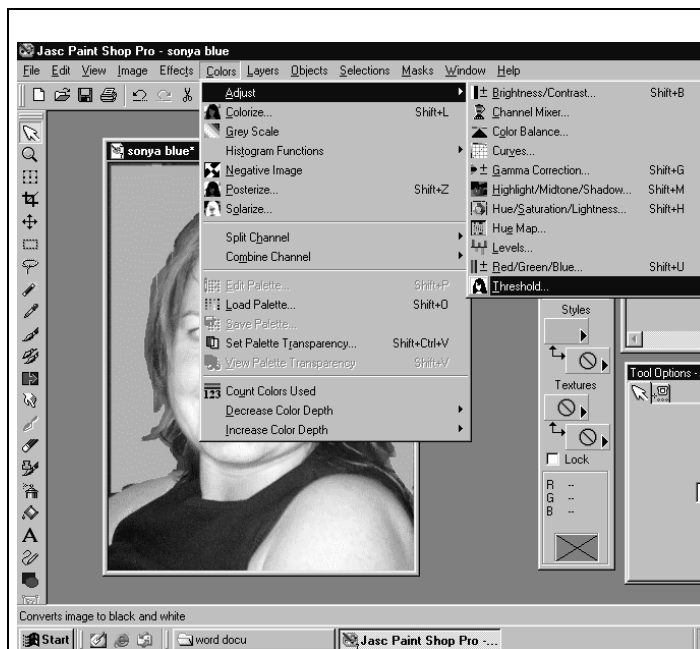
CLICK ONCE

The background is now completely filled with your first colour

These are the five colour codes we will be using today.

- WHITE: #FFFFFF**
- YELLOW: #E5B90B**
- RED: #BF1B42**
- BLUE: #1216B8**
- BLACK: #000000**

5. THIRD LAYER / SECOND COLOUR



Click on the **THIRD LAYER**

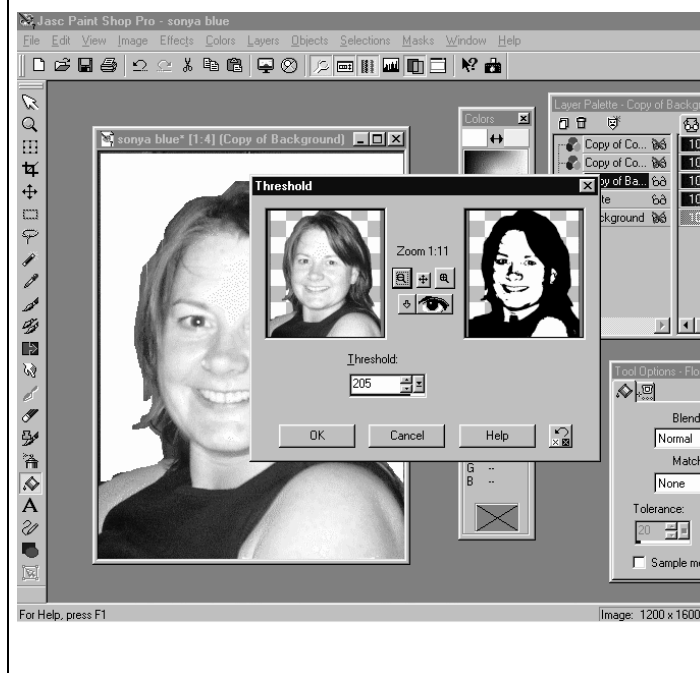
THIS IS NOW ACTIVE
(the red cross is removed from the glasses)

Go to

COLORS

ADJUST

THRESHOLD AND CLICK



By pressing the plus or minus zoom icon you can **ZOOM IN AND OUT**

ZOOM OUT (the minus) to see your whole face

Set the **THRESHOLD** to a number somewhere between **200 and 210**

You must have enough details on your face to recognize that it is you

CLICK OK

Make a copy of this layer and drag it to the top of the Layer Palette

DOUBLE CLICK on this layer and change the name to **FACE**

SET THE LAYER OUT

CTRL S

CLICK on the **THIRD LAYER** again



Click on the **MAGIC WAND TOOL**

Click on a **BLACK SECTION** of your image

A ring will appear around this selection

To ensure that all black is selected go to

SELECTIONS

MODIFY

SELECT SIMILAR

This selection will now become the second colour on your colour sheet

Click on the **FLOOD FILL TOOL**

Place cursor over **COLOUR BOX** and click when the **EYE DROPPER** appears

Fill in the **HTML CODE** in for your **SECOND COLOUR**

CLICK OK

Set the cursor over the **BLACK SELECTION** in your image and **CLICK** (The black colour should now be changed to your second colour)

Press **CTRL SHIFT I** (this inverts the selection so that all white areas are selected)

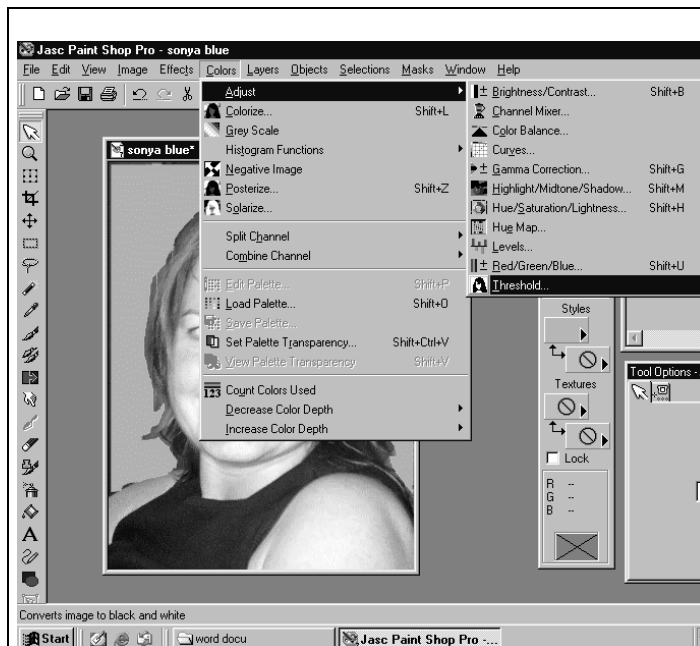
CTRL X (this deletes or cuts away all the white areas)

CTRL D (this deselects your selection)

DOUBLE CLICK ON THE LAYER and change the name to **COLOUR 02**

SET THE LAYER OUT and press **CTRL S**

6. FOURTH LAYER / THIRD COLOUR



Click on the **FOURTH LAYER**

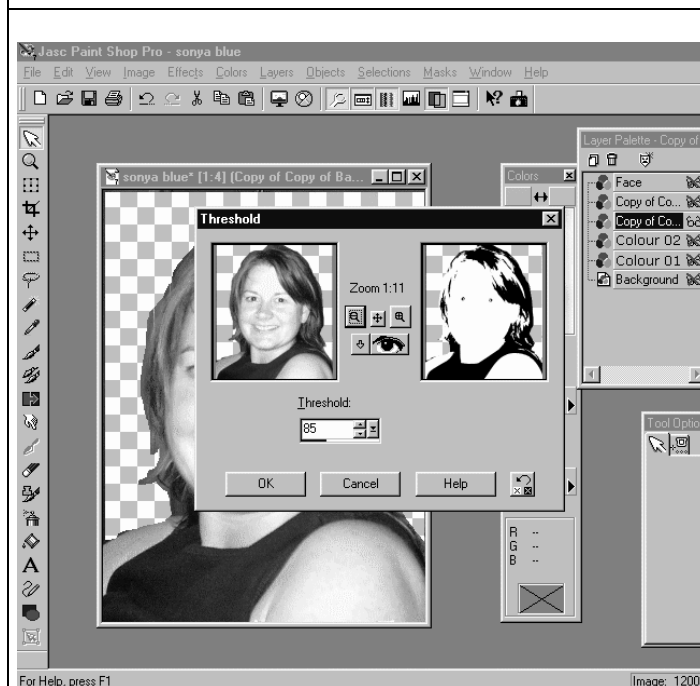
THIS IS NOW ACTIVE
(the red cross is removed from the glasses)

Go to

COLORS

ADJUST

THRESHOLD AND CLICK



ZOOM OUT to see your whole face

Set the **THRESHOLD** to a number somewhere between **75 AND 90**

You should have good hair highlights and minimal facial features

CLICK OK

REPEAT THE PROCEDURE ON PAGE 7 FOR YOUR THIRD CHOSEN COLOUR

Remember to name the layer **COLOUR 03**

CTRL S

7. FIFTH LAYER / FOURTH COLOUR

Create a **NEW LAYER** and name it **COLOUR 04**

Click once on the **COLOUR 02** layer

Click on the **MAGIC WAND TOOL** and then somewhere on the **EMPTY BACKGROUND** (of **COLOUR 02** layer)

CTRL SHIFT I (inverts the selection)

Click once on **COLOUR 04** layer

Click on the **FLOOD FILL TOOL**

Place the cursor over the **COLOUR BOX** and click when the eye dropper appears

Fill the **HTML CODE** in for the **FOURTH AND FINAL COLOUR ON YOUR LIST**

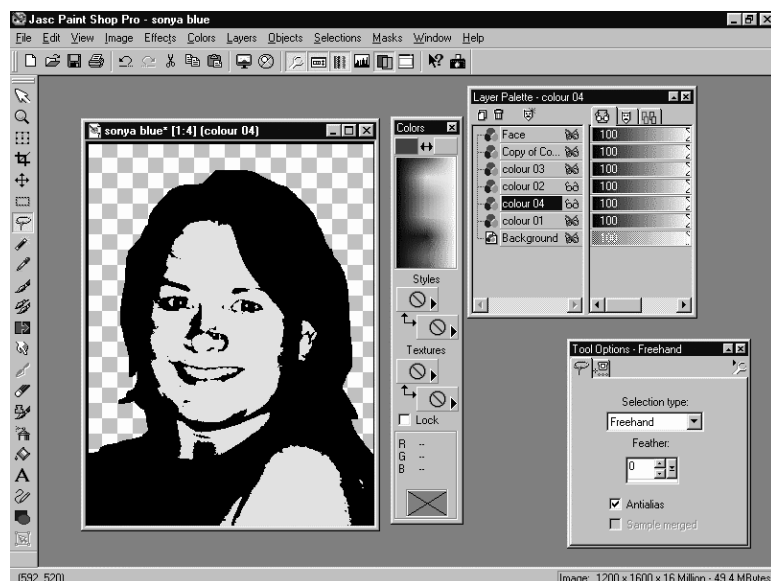
CLICK OK

Drag the cursor over the selection. A **PAINT CAN** will appear.

CLICK ONCE. The selection is now filled with the fourth colour.

Drag this layer to the **THIRD POSITION** in your **LAYER PALETTE**

SET ALL LAYERS OUT and press **CTRL D** followed by **CTRL S**



8. ISOLATING THE FACIAL FEATURES

Click on the **FACE LAYER**

Click on the **MAGIC WAND TOOL**

Click on a **WHITE SECTION** in the image
To make sure that all white elements are selected go to

SELECTIONS

MODIFY

SELECT SIMILAR

CTRL X (All white areas are now deleted or cut away)

Click on the **LASSO TOOL**

With the **LEFT HAND MOUSE BUTTON** held continuously in draw an outline around the facial features

DON'T WORRY IF IT ISN'T PERFECT

With the **SHIFT KEY** held down you can **ADD** new selections
and

With the **CTRL KEY** held down you can **DELETE** sections from your previous selection

See demonstration in the lesson.

Press **SHIFT CTRL I** (this inverts the selection)

CTRL X (everything except the facial features is now deleted)

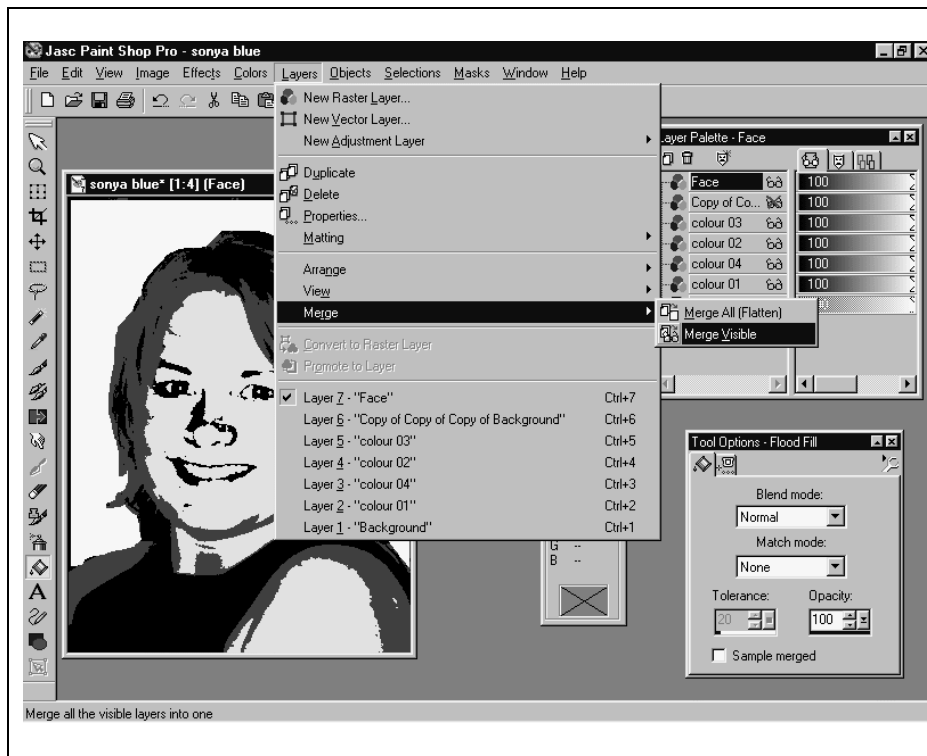
CTRL D (the selection is now deselected) and press **CTRL S**

SET ALL LAYERS ON except the **6th LAYER** or the **BACKGROUND LAYER** and the **COPY OF THE BACKGROUND LAYER**

EXAMPLE:

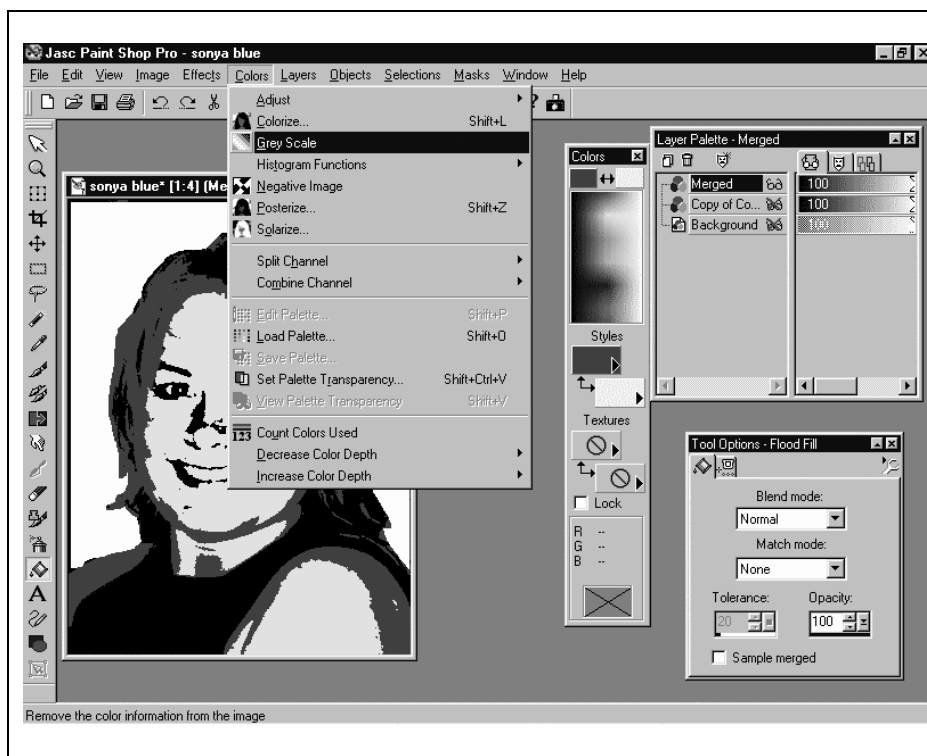
Face	on
Copy of Co...	out
Colour 03	on
Colour 02	on
Colour 04	on
Colour 01	on
Background	out

9. MERGING ALL USABLE LAYERS



Go to
LAYERS
MERGE
MERGE
VISIBLE
CLICK

10. CHANGING TO A GREY SCALE READY FOR PRINTING



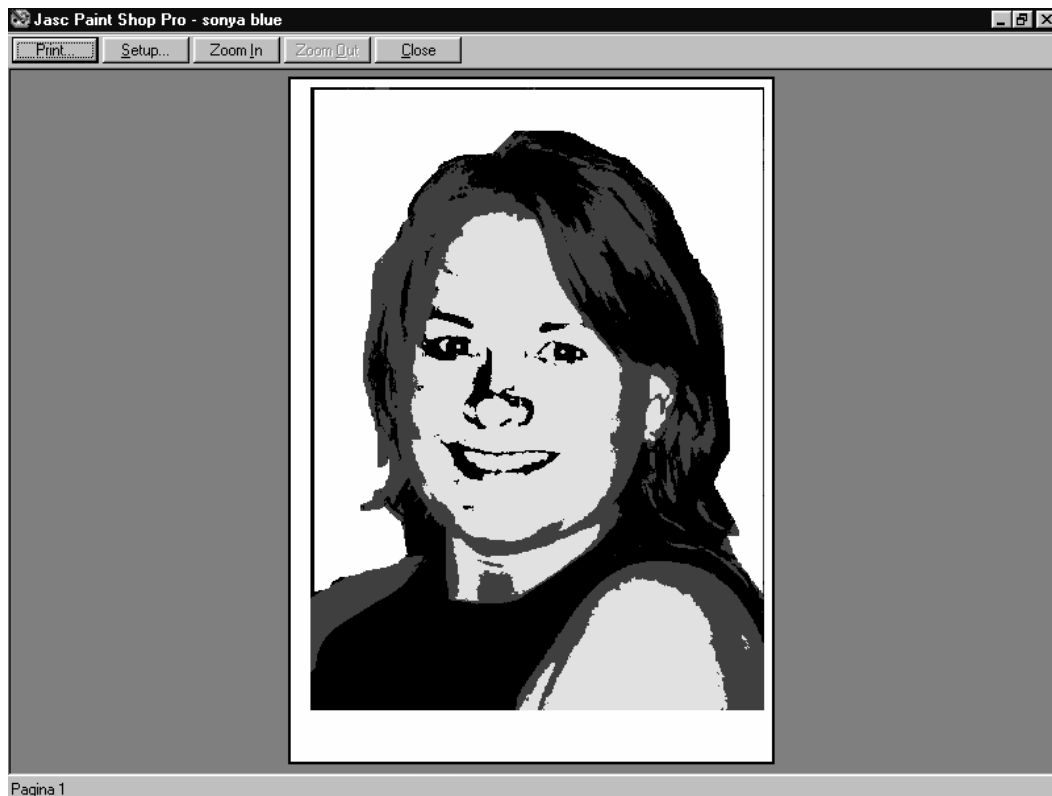
Go to
COLOR
GREYSCALE
CLICK
FILE
SAVE AS
use the same
name plus
add grey at
the end
SAVE

11. PRINTING

Go to

FILE

PRINT PREVIEW (check that it is correct)



Click **PRINT**

Click **OK**

Once it has finished sending the print job to the printer.....

CTRL S

FILE

EXIT